



### RATIONALE

Since 2011, the Bowling Green Area Chamber Foundation has been creating meaningful connections to the world of work to position students in our community to lead their future career path. The powerful partnership between our two school districts and business partners provides students the opportunity to leverage career options important to our high demand sectors. The Foundation is committed to ensuring a talent pipeline for continued growth and sustainable economic impact.

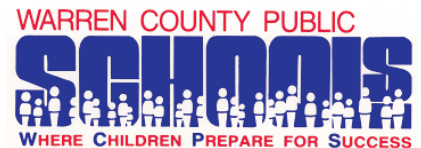
The Foundation views the adoption of the **SCK LAUNCH Work Ethic Certificate** as an important tool that can help provide a pipeline of skilled graduates into today’s workforce. Students are encouraged to complete the certification as evidence of their preparation for transition from school to work and life beyond the classroom.

### PROGRAM

The **SCK LAUNCH Work Ethic Certification** is awarded to high school seniors who complete a series of accomplishments that includes activities, courses and experiences to foster career readiness and portrays **The Ideal Graduate**. The **Work Ethic Certification** is a signal to employers that a student is prepared to engage in the workforce. The certification validates that the individual has acquired habits, knowledge and skills foundational to entering the workforce. Students receiving this recognition should have an advantage when seeking employment as it easily identifies them as potential career ready employees.

### PARTICIPATION

Participation in the **Work Ethic Certification** is voluntary and is the responsibility of the student. Seniors should follow the enrollment application and process defined by their high school. Contact the school’s Guidance Counselor or College and Career Readiness Coach for an application and timeline. The student application packet is available at [www.scklaunch.com](http://www.scklaunch.com).



**THE FUTURE SUCCESS OF OUR ECONOMY  
RESTS IN THE HANDS OF TODAY’S STUDENTS**



## Work Ethic Certification Criteria

To receive the SCK LAUNCH Work Ethic Certification, seniors must earn a high school diploma and provide supporting documentation for the criteria below.

## ACADEMIC, WORK-BASED and/or COMMUNITY INDICATORS

Complete 3 of the following:

- Career Pathway
- Industry Based Certification
- 90% Attendance Senior Year
- Workplace Learning Experience
- Employment
- Dual Credit or AP Completion
- 25 Hours of Community Service
- Participation in Two or More Extracurricular Activities or One Leadership Role

## EMPLOYABILITY SKILLS

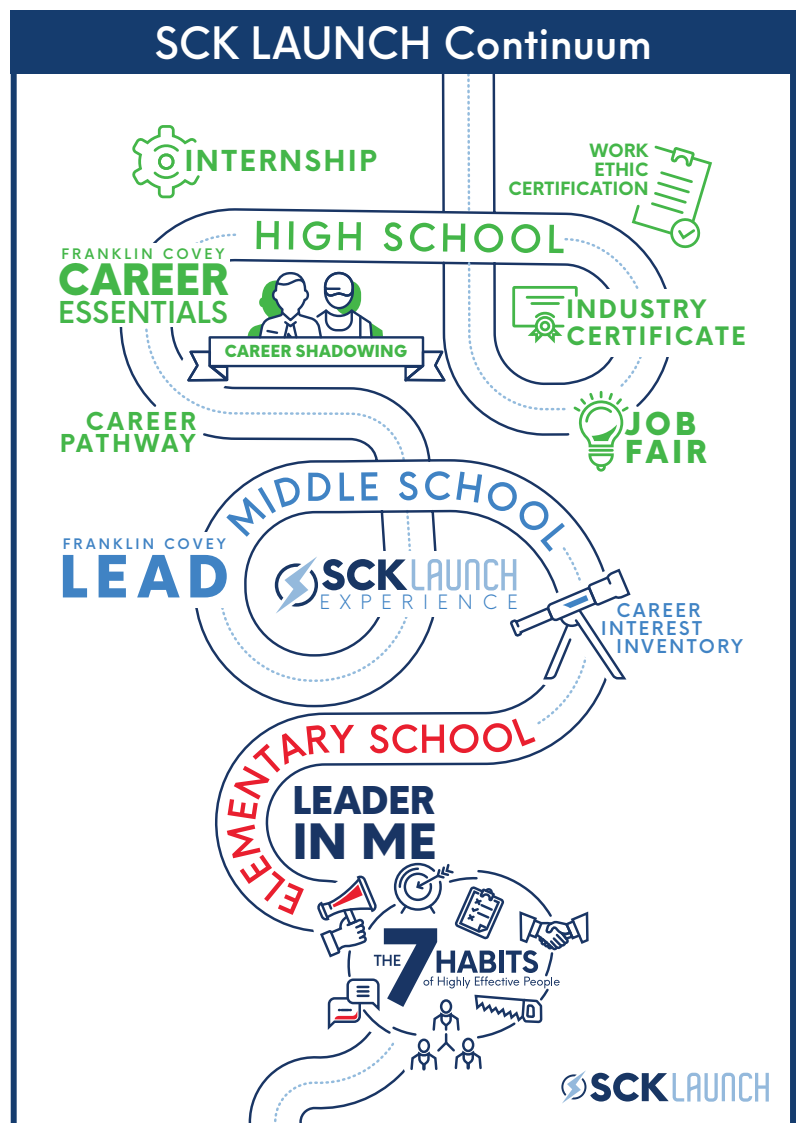
Complete the following employability lessons:

- Greeting Others
- Communication Etiquette
- Resume Preparation
- Interview Skills
- Work Ethic
- Presentation Skills

## READY TO APPLY!

Complete the following:

- Professional Resume
- Completed SCK LAUNCH Job Application



## The Ideal Graduate Profile



### GLOBAL-MINDED

- Possesses the skills to function productively in a global, interdependent work environment
- Appreciates and is able to learn and work with varying social and cultural backgrounds
- Is a responsible team member and contributes to the prosperity of the community and workplace
- Leverages others' perspectives and insights to increase engagement and contribution to develop solutions

#### EMPLOYABILITY SKILLS

TEAMWORK, INTEGRITY,  
RESPECT, DECISION  
MAKING, CONFLICT  
RESOLUTION,  
CULTURAL PROFICIENCY



### LIFELONG LEARNER

- Possesses self-motivated pursuit of knowledge that enhances inclusion, citizenship, development and employability
- Navigates a changing employment landscape that requires ongoing learning to build on knowledge and develop new skills
- Readily accesses, adapts and applies knowledge and skills to be productive and innovatively solve problems
- Continuously adapts to accelerating technologies to maximize performance and collaboration across digital networks

#### EMPLOYABILITY SKILLS

ADAPTABILITY,  
COMMUNICATION, APPLIED  
KNOWLEDGE, CRITICAL  
THINKING, PROBLEM  
SOLVING, PROFESSIONAL  
GROWTH



### EMOTIONAL INTELLIGENCE

- Understands own talents, strengths, challenges and aspirations to navigate and self-advocate for career mobility
- Develops a sense of initiative and entrepreneurial skills to adapt and bring innovation to an organization
- Possesses the initiative to manage fluid goals and time; work independently; and leverage others' strengths to work creatively and collaboratively toward a goal
- Communicates thoughts, ideas and plans with clarity and purpose using written, verbal, nonverbal and visual skills or methods

#### EMPLOYABILITY SKILLS

SELF-AWARENESS,  
INITIATIVE, SELF-ADVOCATE,  
DEPENDABILITY, RELIABILITY,  
PROFESSIONALISM,  
PLANNING & ORGANIZING,  
RELATIONSHIP BUILDING

